



**Old Dominion Freight Line, Inc.**  
**Odfi.com Learning Center**  
**Shipping Tools Help Documentation**



© 2008 Old Dominion Freight Line, Inc., All Rights Reserved

This document is intended for instructional purposes only. Old Dominion Freight Line, Inc. assumes no liability or responsibility for any errors or omissions in this document. Unauthorized distribution prohibited.

This demo covers viewing and/or downloading a list of points served by Old Dominion. You may search for points in a specific state, or you may choose to download points for the entire US.

In either case, the results indicate the closest service center to the point, whether it is served directly or via a partner, and the list may be sorted by city name or zip code.



**Points Directory:**

Make a selection below. Once the search is complete, you will be able to display or download the points data for your selection.

\*\*Direct Points does not imply service days. For accurate service days, please consult [Transit Times](#).

<p><b>By State</b></p> <p>State: <input type="text" value="Please select from list"/></p> <p>Sort Results by: <input checked="" type="radio"/> City <input type="radio"/> Zip</p> <p><a href="#">Get This State &gt;</a></p>	<p><b>All States</b></p> <p>Please note: this option requires a large amount of information that may take several minutes to compile. Please be patient while the page reloads.</p> <p><a href="#">Get All States &gt;</a></p>
--	--

**Company Info**  
[Service Center Locations](#)  
[Careers](#)  
[Company Facts](#)

**Contact Us**  
[InfoCall1 Customer Service](#)  
[Phone and Email Info](#)  
[OD Solutions Center](#)

**Help**  
[FAQs](#)  
[PDF Document Help](#)  
[Tiff Document Help](#)  
[Animated Demos](#)

**Services**  
[OD Domestic](#)  
[OD Expedited](#)  
[OD Global](#)  
[OD Technology](#)

**odfl4me**  
[Register](#)  
[Benefits of Registering](#)  
[Log In](#)  
[Manage odfl4me Account](#)  
[Lost Username / Password](#)

[Terms & Conditions](#) | [Privacy Policy](#) | [Site Index](#) | [Employee Access](#) © 2008 Old Dominion Freight Line, Inc

Slide 2

Text Captions: Getting a list of points (locations) served by Old Dominion is simple.



**Points Directory:**

Make a selection below. Once the search is complete, you will be able to display or download the points data for your selection.

\*\*Direct Points does not imply service days. For accurate service days, please consult [Transit Times](#).

<b>By State</b> State: <input type="text" value="Please select from list"/> Sort Results by: <input checked="" type="radio"/> City <input type="radio"/> Zip <a href="#">Get This State &gt;</a>	<b>All States</b> Please note: this option requires a large amount of information that may take several minutes to compile. Please be patient while the page reloads. <a href="#">Get All States &gt;</a>
---	---

**Company Info**  
[Service Center Locations](#)  
[Careers](#)  
[Company Facts](#)

**Contact Us**  
[InfoCall1 Customer Service](#)  
[Phone and Email Info](#)  
[OD Solutions Center](#)

**Help**  
[FAQs](#)  
[PDF Document Help](#)  
[Tiff Document Help](#)  
[Animated Demos](#)

**Services**  
[OD Domestic](#)  
[OD Expedited](#)  
[OD Global](#)  
[OD Technology](#)

**odfl4me**  
[Register](#)  
[Benefits of Registering](#)  
[Log In](#)  
[Manage odfl4me Account](#)  
[Lost Username / Password](#)

[Terms & Conditions](#) | [Privacy Policy](#) | [Site Index](#) | [Employee Access](#) © 2008 Old Dominion Freight Line, Inc

Slide 3

Text Captions: First, choose the state for which you'd like a list of locations served.



**Points Directory:**

Make a selection below. Once the search is complete, you will be able to display or download the points data for your selection.

\*\*Direct Points does not imply service days. For accurate service days, please consult [Transit Times](#).

<b>By State</b> State: <input type="text" value="AL - Alabama"/> Sort Results by: <input checked="" type="radio"/> City <input type="radio"/> Zip <a href="#">Get This State &gt;</a>	<b>All States</b> Please note: this option requires a large amount of information that may take several minutes to compile. Please be patient while the page reloads. <a href="#">Get All States &gt;</a>
--	---

[Company Info](#)  
[Service Center Locations](#)  
[Careers](#)  
[Company Facts](#)

[Contact Us](#)  
[InfoCall1 Customer Service](#)  
[Phone and Email Info](#)  
[OD Solutions Center](#)

[Help](#)  
[FAQs](#)  
[PDF Document Help](#)  
[Tiff Document Help](#)  
[Animated Demos](#)

[Services](#)  
[OD Domestic](#)  
[OD Expedited](#)  
[OD Global](#)  
[OD Technology](#)

[odfl4me](#)  
[Register](#)  
[Benefits of Registering](#)  
[Log In](#)  
[Manage odfl4me Account](#)  
[Lost Username / Password](#)

[Terms & Conditions](#) | [Privacy Policy](#) | [Site Index](#) | [Employee Access](#) © 2008 Old Dominion Freight Line, Inc

Slide 4

Text Captions: Next choose if you want your list to be sorted by city name or zip code.

Press Get This State.

It may take several seconds to return results, depending on the number of OD-served locations in the state you selected.



**Points Directory: AL**

Make a selection below. Once the search is complete, you will be able to display or download the points data for your selection.

\*\*Direct Points does not imply service days. For accurate service days, please consult [Transit Times](#).

<b>By State</b> State: <input type="text" value="AL - Alabama"/> Sort Results by: <input checked="" type="radio"/> City <input type="radio"/> Zip <a href="#">Get This State &gt;</a>	<b>All States</b> Please note: this option requires a large amount of information that may take several minutes to compile. Please be patient while the page reloads. <a href="#">Get All States &gt;</a>
--	---

**Your search returned 1469 matches.**  
Click on appropriate button to display the results to the screen or download a file.

[Display](#) [Download](#)

<b>Company Info</b> <a href="#">Service Center Locations</a> <a href="#">Careers</a> <a href="#">Company Facts</a>	<b>Contact Us</b> <a href="#">InfoCall1 Customer Service</a> <a href="#">Phone and Email Info</a> <a href="#">OD Solutions Center</a>	<b>Help</b> <a href="#">FAQs</a> <a href="#">PDF Document Help</a> <a href="#">Tiff Document Help</a> <a href="#">Animated Demos</a>	<b>Services</b> <a href="#">OD Domestic</a> <a href="#">OD Expedited</a> <a href="#">OD Global</a> <a href="#">OD Technology</a>	<b>odfl4me</b> <a href="#">Register</a> <a href="#">Benefits of Registering</a> <a href="#">Log In</a> <a href="#">Manage odfl4me Account</a> <a href="#">Lost Username / Password</a>
---	--	--	--	---

[Terms & Conditions](#) | [Privacy Policy](#) | [Site Index](#) | [Employee Access](#) © 2008 Old Dominion Freight Line, Inc

Slide 5

Text Captions: The number of matching locations is returned first.  
Now you may choose to display the list on the screen  
or download it to your computer as a zipped comma-separated (CSV) file.



**Points Directory: AL**

Make a selection below. Once the search is complete, you will be able to display or download the points data for your selection.

\*\*Direct Points does not imply service days. For accurate service days, please consult [Transit Times](#).

**By State**

State:

Sort Results by:  City  Zip

[Get This State >](#)

**All States**

Please note: this option requires a large amount of information that may take several minutes to compile. Please be patient while the page reloads.

[Get All States >](#)

**Your search returned 1469 matches.**  
Click on appropriate button to display the results to the screen or download a file.

[Display](#)   [Download](#)

City	Zip Code(s)	Service Center	Service Type
ABANDA	36276	ATL	Direct
ABBEVILLE	36310	DHN	Direct
ABEL	36258	BHM	Direct
ABERCROMBE	35042	BHM	Direct
ABERFOIL	36089	MGM	Direct
ABERNANT	35440	BHM	Direct
ACKERVILLE	36768	MGM	Direct
ACMAR	35004	BHM	Direct
ADA	36069	MGM	Direct
ADAMSVILLE	35005	BHM	Direct
ADDISON	35540	BHM	Direct
ADGER	35006	BHM	Direct
AKRON	35441	BHM	Direct

Slide 6

Text Captions: If you choose to display it on the screen, the list will appear immediately, sorted in the manner that you selected. The list includes cities served in that state, their zip codes, the three-letter code for the OD service center nearest that location, and whether the location is served directly by OD, or in conjunction with a partner carrier.



**Points Directory: AL**

Make a selection below. Once the search is complete, you will be able to display or download the points data for your selection.

\*\*Direct Points does not imply service days. For accurate service days, please consult [Transit Times](#).

<b>By State</b> State: <input type="text" value="AL - Alabama"/> Sort Results by: <input checked="" type="radio"/> City <input type="radio"/> Zip <a href="#">Get This State &gt;</a>	<b>All States</b> Please note: this option requires a large amount of information that may take several minutes to compile. Please be patient while the page reloads. <a href="#">Get All States &gt;</a>
--	---

**Your search returned 1469 matches.**  
Click on appropriate button to display the results to the screen or download a file.

[Display](#) [Download](#)

<b>Company Info</b> <a href="#">Service Center Locations</a> <a href="#">Careers</a> <a href="#">Company Facts</a>	<b>Contact Us</b> <a href="#">InfoCall1 Customer Service</a> <a href="#">Phone and Email Info</a> <a href="#">OD Solutions Center</a>	<b>Help</b> <a href="#">FAQs</a> <a href="#">PDF Document Help</a> <a href="#">Tiff Document Help</a> <a href="#">Animated Demos</a>	<b>Services</b> <a href="#">OD Domestic</a> <a href="#">OD Expedited</a> <a href="#">OD Global</a> <a href="#">OD Technology</a>	<b>odfl4me</b> <a href="#">Register</a> <a href="#">Benefits of Registering</a> <a href="#">Log In</a> <a href="#">Manage odfl4me Account</a> <a href="#">Lost Username / Password</a>
---	--	--	--	---

[Terms & Conditions](#) | [Privacy Policy](#) | [Site Index](#) | [Employee Access](#) © 2008 Old Dominion Freight Line, Inc

Slide 7

Text Captions: If you choose to download the list rather than view it on the screen,



**Points Directory: AL**

Make a selection below. Once the search is complete, you will be able to display or download the points data for your selection.

\*\*Direct Points does not imply service days. For accurate service days, please consult [Transit Times](#).

By State:

Sort Results by:  City  ZIP

Your search returned 1469 results. Click on appropriate button to display or download.

City	ZIP	Service Type
ABANDA		Direct
ABBEVILLE		Direct
ABEL		Direct
ABERCROMBE		Direct
ABERFOIL		Direct
ABERNANT	35440	BHM
ACKERVILLE	36768	MGM
ACMAR	35004	BHM
ADA	36069	MGM
ADAMSVILLE	35005	BHM
ADDISON	35540	BHM
ADGER	35006	BHM
AKRON	35441	BHM

**File Download**

Do you want to open or save this file?

Name: ALoutfile.zip  
 Type: WinRAR ZIP archive, 11.2KB  
 From: wwwdev.odfl.com

Always ask before opening this type of file

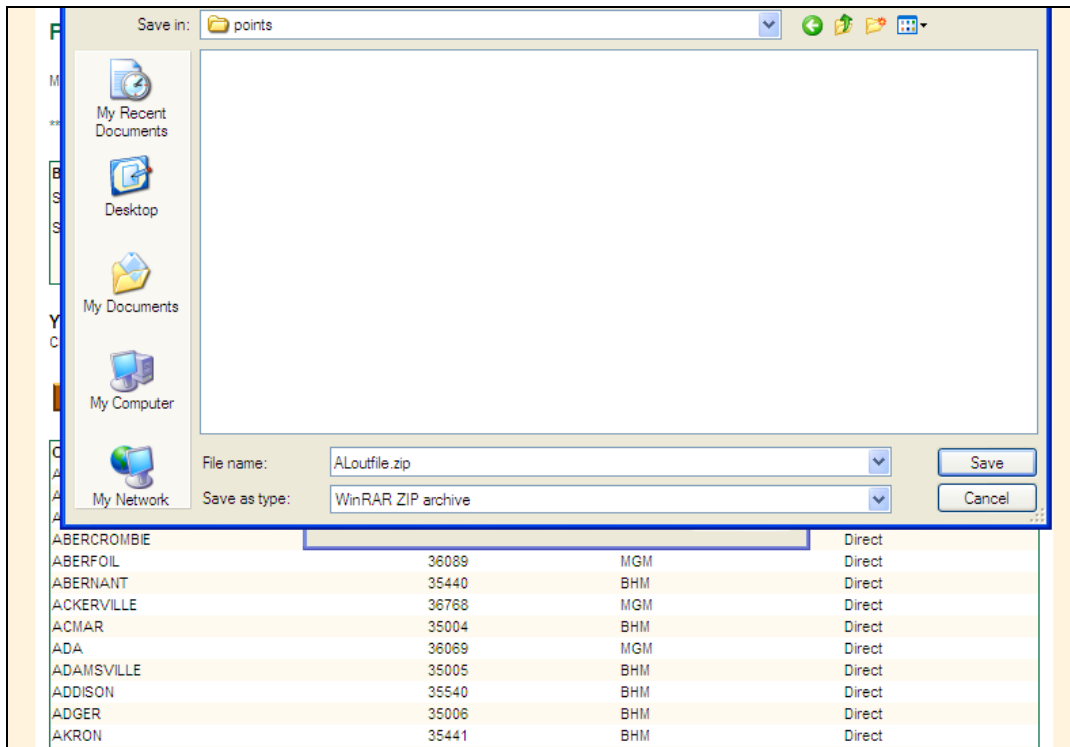
While files from the Internet can be useful, some files can potentially harm your computer. If you do not trust the source, do not open or save this file. [What's the risk?](#)

Slide 8

Text Captions: A dialog box will typically ask if you want to open or save the file.

Since the file is zipped (compressed), you will probably want to save it to your computer so you can unzip it with your own zip utility, such as WinZip, WinRar or Aladdin.





Slide 9

Text Captions: Select a location on your computer where you will be able to easily locate the file  
Then press Save.



**Points Directory:**

Make a selection below. Once the search is complete, you will be able to display or download the points data for your selection.

\*\*Direct Points does not imply service days. For accurate service days, please consult [Transit Times](#).

<p><b>By State</b></p> <p>State: <input type="text" value="Please select from list"/></p> <p>Sort Results by: <input checked="" type="radio"/> City <input type="radio"/> Zip</p> <p><a href="#">Get This State &gt;</a></p>	<p><b>All States</b></p> <p>Please note: this option requires a large amount of information that may take several minutes to compile. Please be patient while the page reloads.</p> <p><a href="#">Get All States &gt;</a></p>
--	--

**Company Info**  
[Service Center Locations](#)  
[Careers](#)  
[Company Facts](#)

**Contact Us**  
[InfoCall1 Customer Service](#)  
[Phone and Email Info](#)  
[OD Solutions Center](#)

**Help**  
[FAQs](#)  
[PDF Document Help](#)  
[Tiff Document Help](#)  
[Animated Demos](#)

**Services**  
[OD Domestic](#)  
[OD Expedited](#)  
[OD Global](#)  
[OD Technology](#)

**odfl4me**  
[Register](#)  
[Benefits of Registering](#)  
[Log In](#)  
[Manage odfl4me Account](#)  
[Lost Username / Password](#)

[Terms & Conditions](#) | [Privacy Policy](#) | [Site Index](#) | [Employee Access](#) © 2008 Old Dominion Freight Line, Inc

Slide 10

Text Captions: If you wish to see a list of all US locations served by OD, simply press Get All States instead of choosing a state on the initial screen.



**Points Directory:**

Make a selection below. Once the search is complete, you will be able to display or download the points data for your selection.

\*\*Direct Points does not imply service days. For accurate service days, please consult [Transit Times](#).

<b>By State</b> State: <input type="text" value="Please select from list"/> Sort Results by: <input checked="" type="radio"/> City <input type="radio"/> Zip <a href="#">Get This State &gt;</a>	<b>All States</b> Please note: this option requires a large amount of information that may take several minutes to compile. Please be patient while the page reloads. <a href="#">Get All States &gt;</a>
---	---

Your search returned 58542 matches.  
[Download](#)

<b>Company Info</b> <a href="#">Service Center Locations</a> <a href="#">Careers</a> <a href="#">Company Facts</a>	<b>Contact Us</b> <a href="#">InfoCall1 Customer Service</a> <a href="#">Phone and Email Info</a> <a href="#">OD Solutions Center</a>	<b>Help</b> <a href="#">FAQs</a> <a href="#">PDF Document Help</a> <a href="#">Tiff Document Help</a> <a href="#">Animated Demos</a>	<b>Services</b> <a href="#">OD Domestic</a> <a href="#">OD Expedited</a> <a href="#">OD Global</a> <a href="#">OD Technology</a>	<b>odfl4me</b> <a href="#">Register</a> <a href="#">Benefits of Registering</a> <a href="#">Log In</a> <a href="#">Manage odfl4me Account</a> <a href="#">Lost Username / Password</a>
---	--	--	--	---

[Terms & Conditions](#) | [Privacy Policy](#) | [Site Index](#) | [Employee Access](#) © 2008 Old Dominion Freight Line, Inc

Slide 11

Text Captions: As before, the total number of matches is displayed, But because the list of the entire US is too large to display on the screen, We currently only offer downloading to your computer.





Slide 12

Text Captions: Congratulations! This concludes the Points Directory demo. You may also find the below links helpful.

If you want to try it yourself, use the Points Directory tool right now!

Watch a demo on how to determine the transit (shipping) time between two zip/postal codes.

[Shipping Times and Locations](#)

[Points Directory](#)

